

Find Japan



What two nations on the map did the European nation of Great Britain imperialize (colonize) during the 1700s-1800s?



If you were Japan, a non-industrialized nation near China & India, would you be nervous about the European colonization of your neighboring nations? Why?

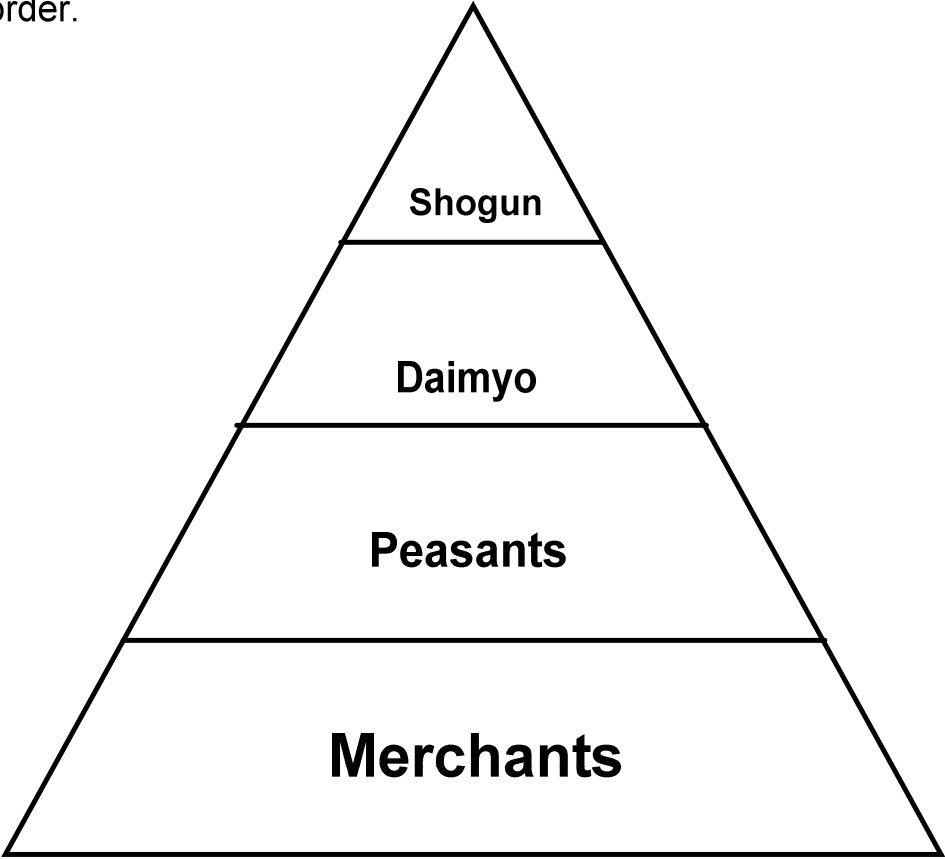
Japanese Culture Prior to 1868

The Tokugawa Shogunate

- A dynasty that ruled Japan from 1603-1868.
- During these 265 years, the shoguns (military commanders) ruled over Japan.



Tokugawa Society was rigidly structured under feudalism. These was strict social order.





Samurai

The Tokugawa Shoguns intentionally isolated Japan from western culture, which they viewed as inferior.

Result: Japanese culture had limited cultural diffusion from the West. Japanese technology suffered.



A set of specific developments made late-Tokugawa Japan ripe for change. Many of the country's leaders grew interested in the ways of the West, as they began learning about the Industrial Revolution and the imperialist adventures that was bringing China under the European sway. At the same time, American and European seaman began visiting Japan's ports after the early 1800s, seeking an end to the country's isolation policy.

What was making Japan ready for change?

<http://www.teachertube.com/video/meiji-restoration-208514>

What caused Japan to fall behind in developing modern technology?

Japan was isolated from the rest of the world.

What did Commodore Matthew Perry demand?

Perry demanded the Japanese to open their country for trade with the United States

What processes did Emperor Meiji begin?

Westernization and Modernization

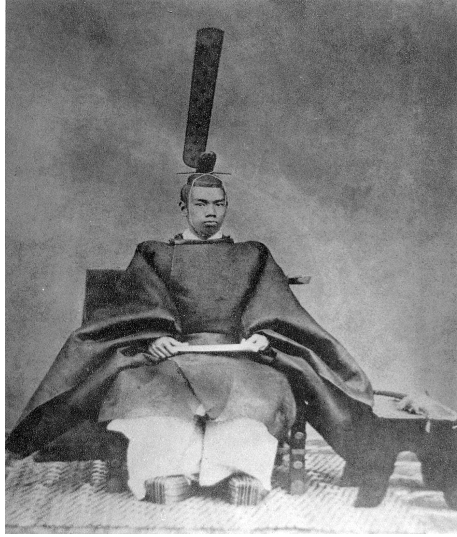
What new technologies were introduced to Japan?

Trains, modern factory machines, and modern guns

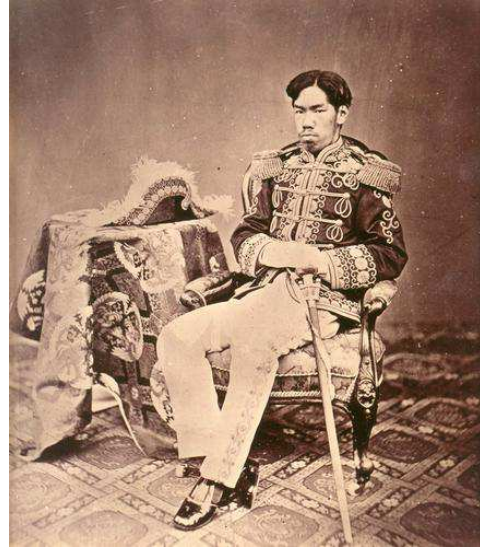
Meiji Restoration= _____ (_____ , _____)

<https://youtu.be/ELhhJOuEEQk>

What social, cultural, and economic changes occurred during the Meiji Restoration?



Tokugawa Emperor



Emperor Meiji

Meiji Restoration: Westernization + Modernization of Japan

Creation of constitutional government

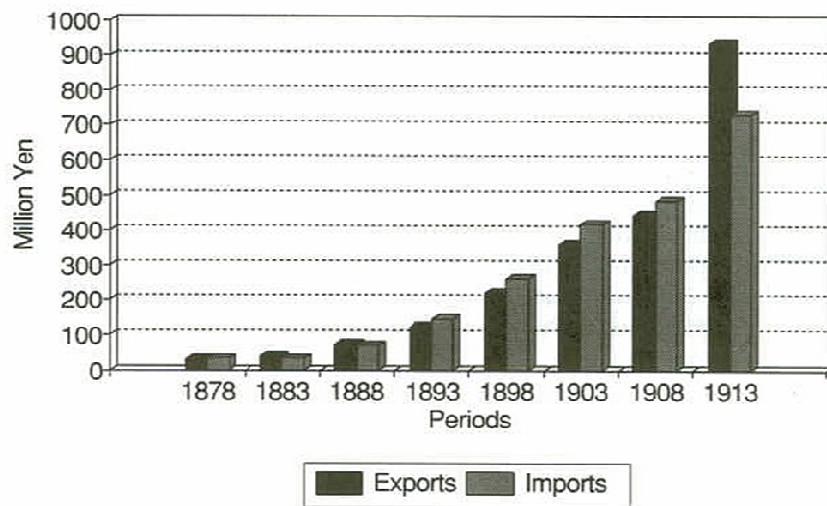
- Constitution of 1889, Japan used Germany's constitution as a model.
- Established constitutional monarchy and legislature
- Recognized individual rights (state was above individual)

Industrialization

- Modernized transportation, communication, and education
- Government ran businesses were sold to private investors (Example of private ownership)
- Economic power was placed into the hands of a few powerful families

The Growth of Japanese Trade

Five-Year Periods Beginning 1878





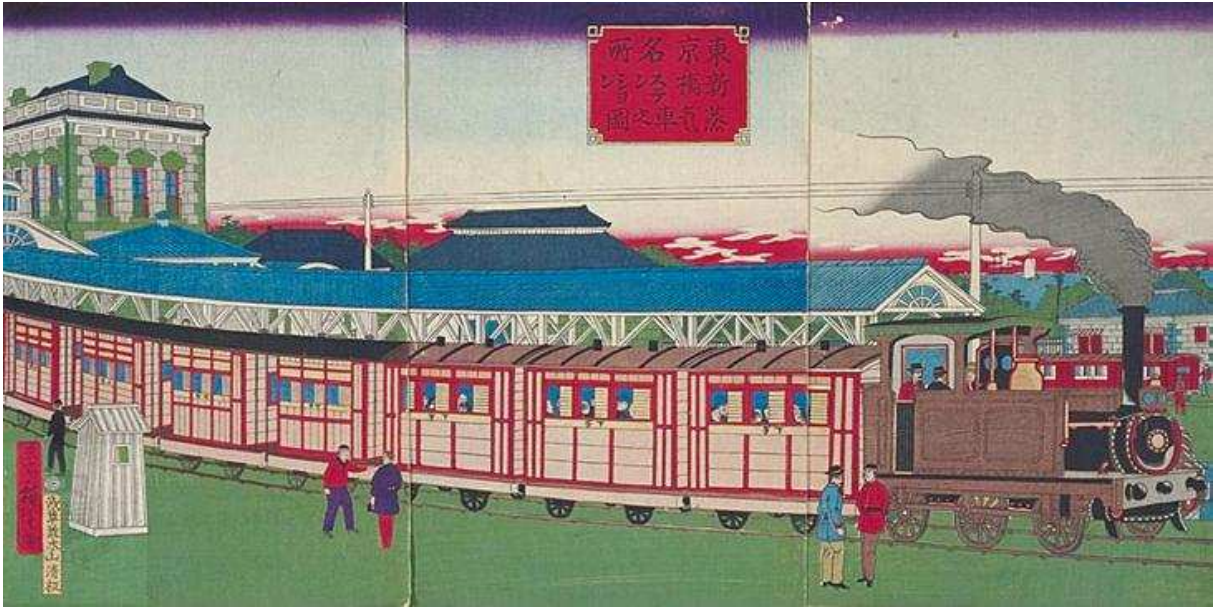
Samurai-Tokugawa



Meiji Military



What are these examples of?









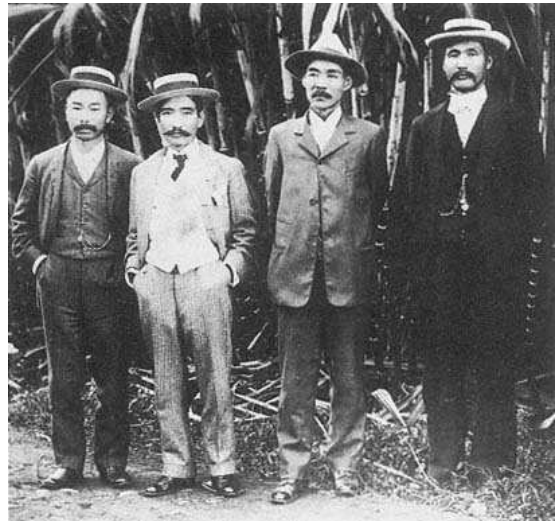
A British Man



A Japanese Family: Meiji Restoration



Traditional Japanese Attire



Following Meiji Restoration



Western Women Attire



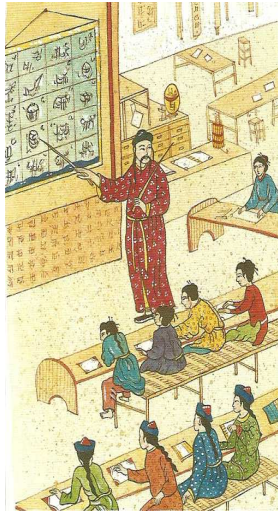
Following Meiji Restoration



Traditional Japanese Attire



Following Meiji Restoration



How did the Meiji view education?

One effect of industrialization on Meiji Japan was that it

- A. modernized transportation
- B. strengthened power of the shogunate
- C. decreased levels of pollution
- D. increased the number of small farms

Which action in Japanese history occurred during the Meiji Restoration?

- A. Buddhism became the official religion of Japan
- B. Japan modernized its economy
- C. The Japanese government adopted an isolationist policy
- D. Mongols invaded the islands of Japan

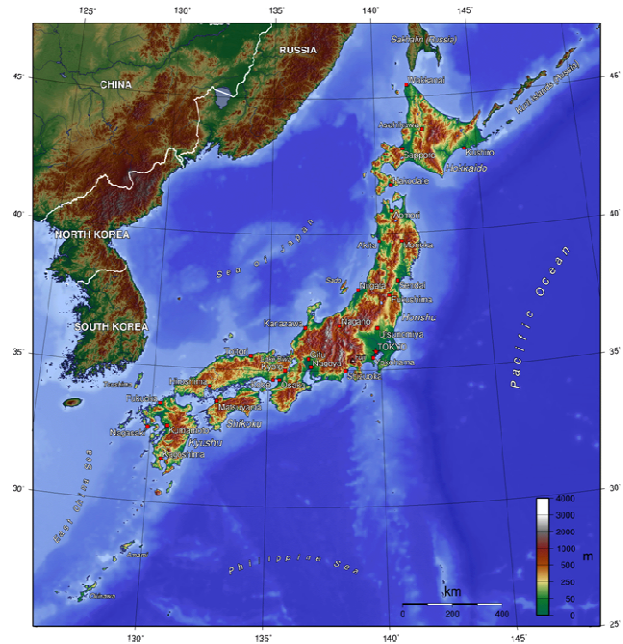
Aim: How and why did Japan become an imperial power



What development allowed for Japanese imperialism?

Reasons for Japanese Imperialism

- Need of land and natural resources, Japan's terrain was mountainous.



Reasons for Japanese Imperialism

- The desire to resist Western domination

*In the West there is England,
In the North, Russia.
My countrymen, be careful!
Outwardly they make treaties,
But you cannot tell
What is at the bottom of their hearts.
There is a Law of Nations, it is true,
But when the moment comes, remember,
The Strong eat up the Weak.*

(Popular Japanese song, 1880s)

What is the overall message of this song?

Regions of Japanese Interests



Manchuria (occupied by Russia)

Korea (Territory controlled by China)

Why were the Japanese interested in these regions?

Sino-Japanese War (1894-1895)

Conflict (War) between China and Japan

Significance: Japan emerged as a major world power and further illustrated China as a weak power

- Japan forced Korea to trade with Japan
- Korea declared itself independent from China (under Japan influence)
- China's military was much larger than Japan's
- Japan was modernized and defeated China
- Japan gained the territory of Korea



How does this image explain the Sino-Japanese War?

Russo-Japanese War (1904-1905)

Military conflict (War) between Russia and Japan.

Significance: Japan emerged victorious. Forcing Russia to end its imperialist policies in East Asia. Japan became the first Asia power to defeat a European power

- Developed out the competition between Russia and Japan for control of Manchuria
- Japan defeated Russia
- Japan gained territory in southern Manchuria





How does this image explain the Russo-Japanese War?



What allowed Japan to become the imperialist and China to become the colonized?